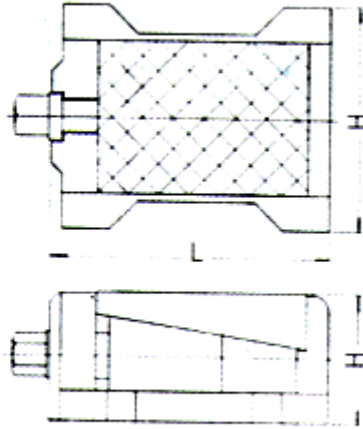


LEVELING BLOCK

A-



		L	W	H			(Kg)	(\$)
A	LBA-125	125	95	63	4	M 16	2,000	98
	LBA-170	170	140	82	5	M20	4,500	147
	LBA-215	215	165	105	6	M24	7,500	195

* : FCD35 →

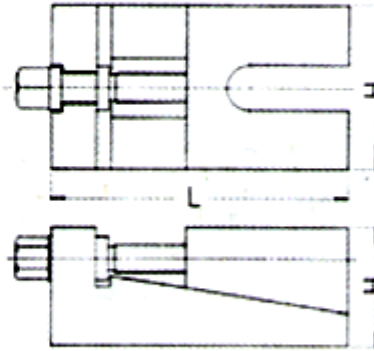
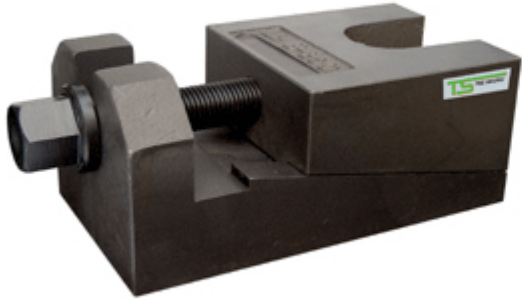
* : S45C

→

→

LEVELING BLOCK

B -



-

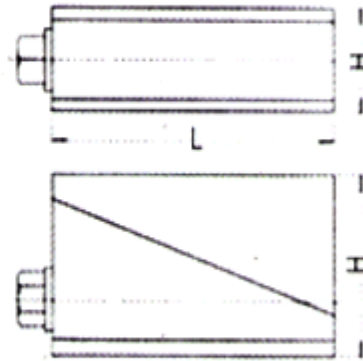
		L	W	H			(Kg)	(\$)
B	LBB-200	200	110	80	5	M20	5,000	165
	LBB-250	250	135	100	6	M24	7,500	210

* : FCD35 ->

* : S45C ->

LEVELING BLOCK

C-



-

		L	W	H			(Kg)	(\$)
C	LBC-100	100	55	60	10	M16	1,500	65
	LBC-200	200	65	115	25	M24	5,000	175
	LBC-300	300	85	155	25	M30	12,000	350

* 4 : FCD3F -->

* : S45C

-->

-->

